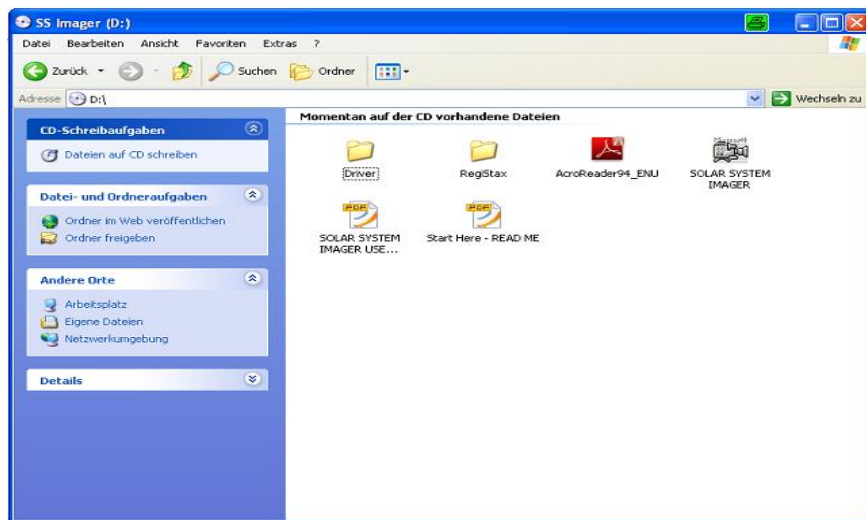


# Quick Guide “Omegon Camera CCD Solar System Imager” Installation for Windows XP

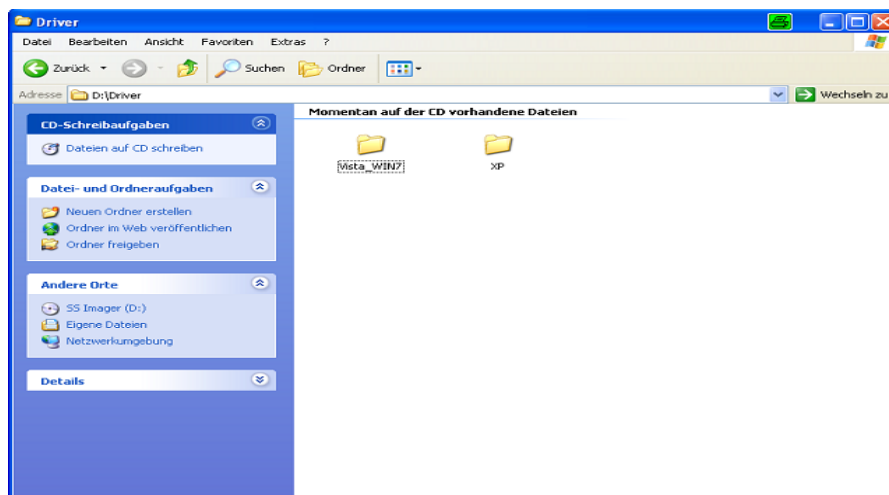
Installing the Omegon CCD camera Driver

With the camera disconnected

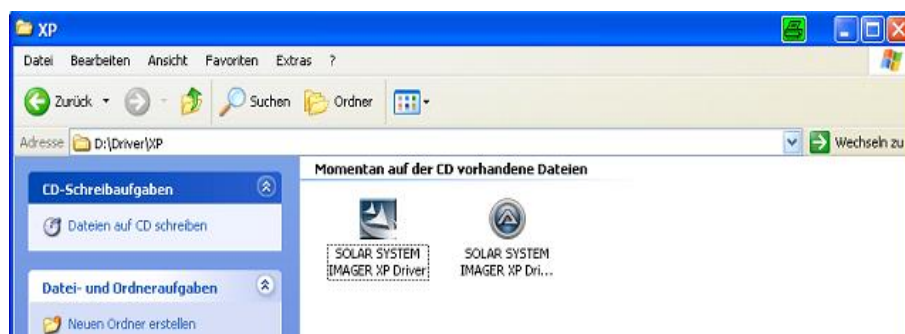
Open -> the folder “Driver” from the CD -ROM file



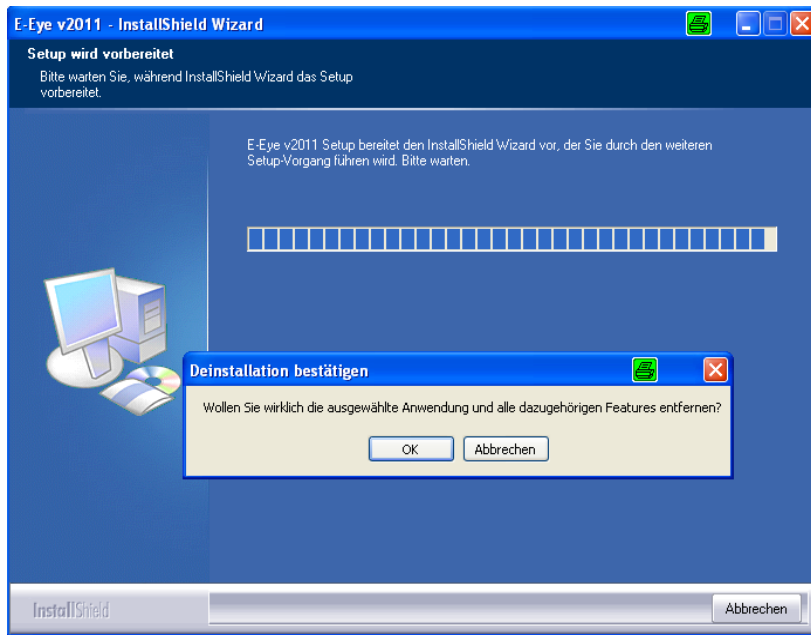
Open → the folder “XP”



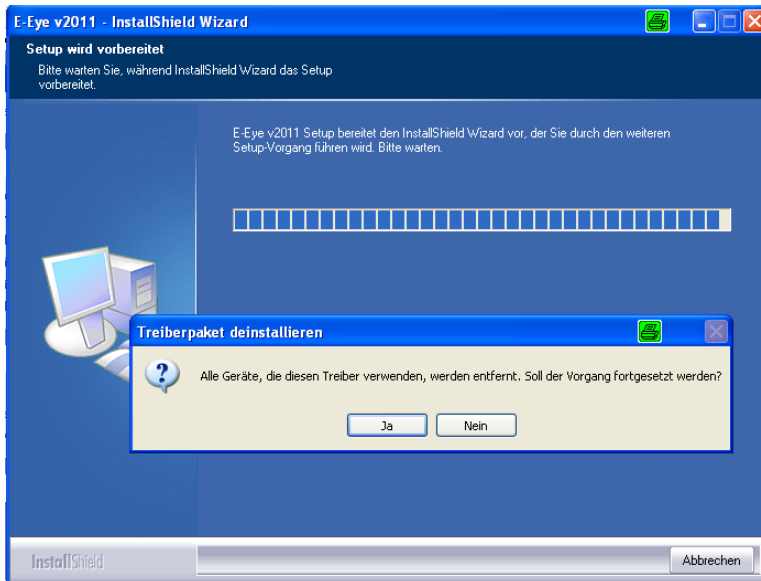
Click on → “Solar System Imager XP Driver”



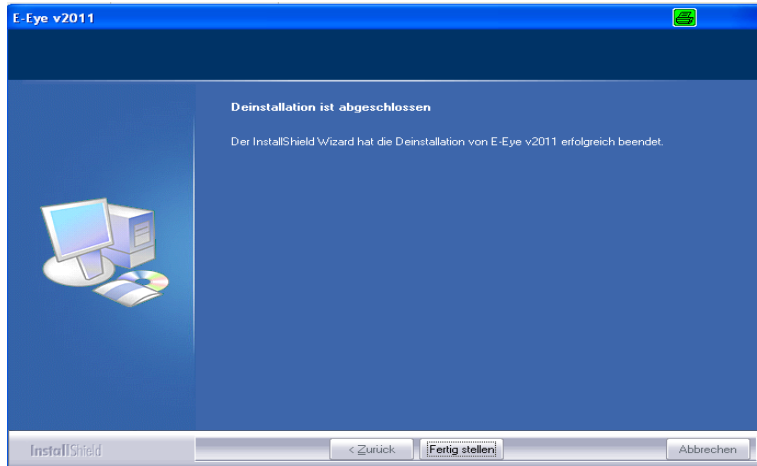
The E-Eye v2011 – InstallShield Wizard will start to install  
Click -> Ok to continue



Click – Yes

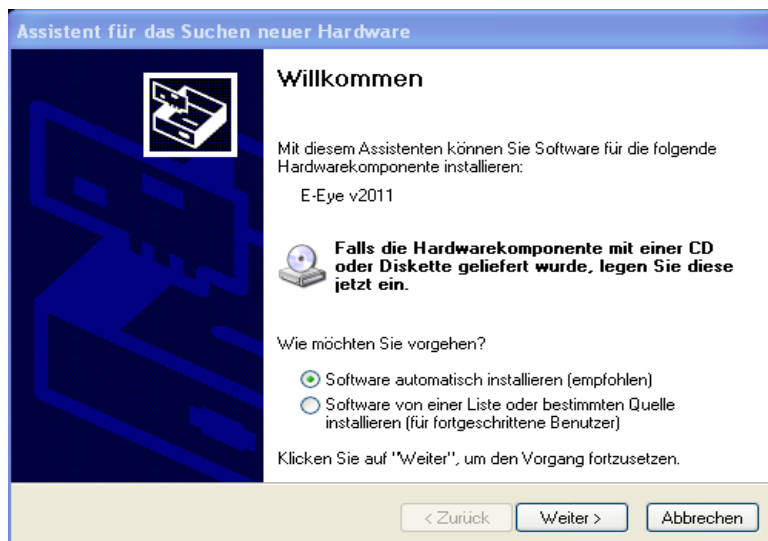


Click -> yes when install is complete

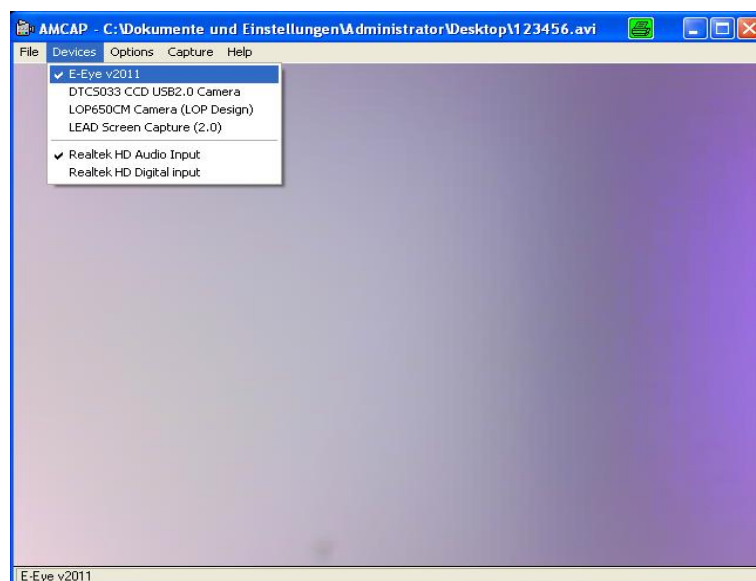


## Connect the Camera USB cable to the computer

1. The new hardware's assistant will be open  
click – continue



2. Download Omegon®Amcap.exe camera software and choose "E-Eye v2011"



The camera will start to capture image